

# SEC COLLINS STREET & DEBBIE LANE

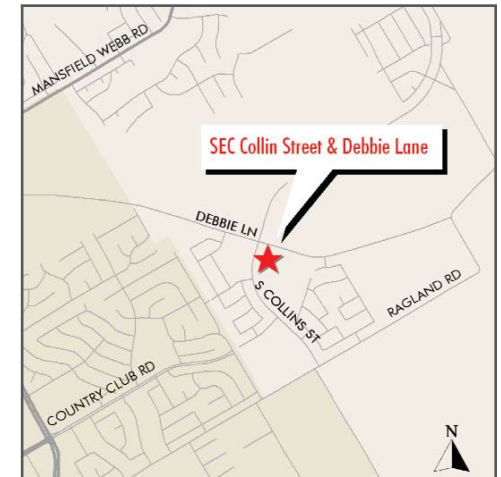
Arlington, Texas

# FOR SALE

RETAIL LAND — WET SITE



±21.5 Acres  
Will Divide



Owned by:



[www.cbre.com](http://www.cbre.com)

## CBRE

CB RICHARD ELLIS

5430 LBJ Freeway, Suite 1100

Dallas, TX 75240

T 972.458.4800 / F 972.702.8315

For additional information, please contact:

**Jim Whitten**

First Vice President

972.458.4885

[jim.whitten@cbre.com](mailto:jim.whitten@cbre.com)

**William Busch**

Senior Sales Analyst

972.458.4852

[william.busch@cbre.com](mailto:william.busch@cbre.com)

# SEC COLLINS STREET & DEBBIE LANE

Arlington, Texas

# FOR SALE

**LOCATION:** Southeast corner of Collins Street and Debbie Lane, just west of State Highway 360 in Arlington, Texas (Mapsco# 111-X,Y)

**SIZE:** ±21.5 Acres (divisible)

**FRONTAGE:** Collins ±1,620'  
Debbie ± 929'

**TRAFFIC COUNTS:** Debbie ±11,172 (City of Mansfield, 2005)

**ZONING:** "PD-CS": Planned Development – Community Service

**UTILITIES:** Available to area

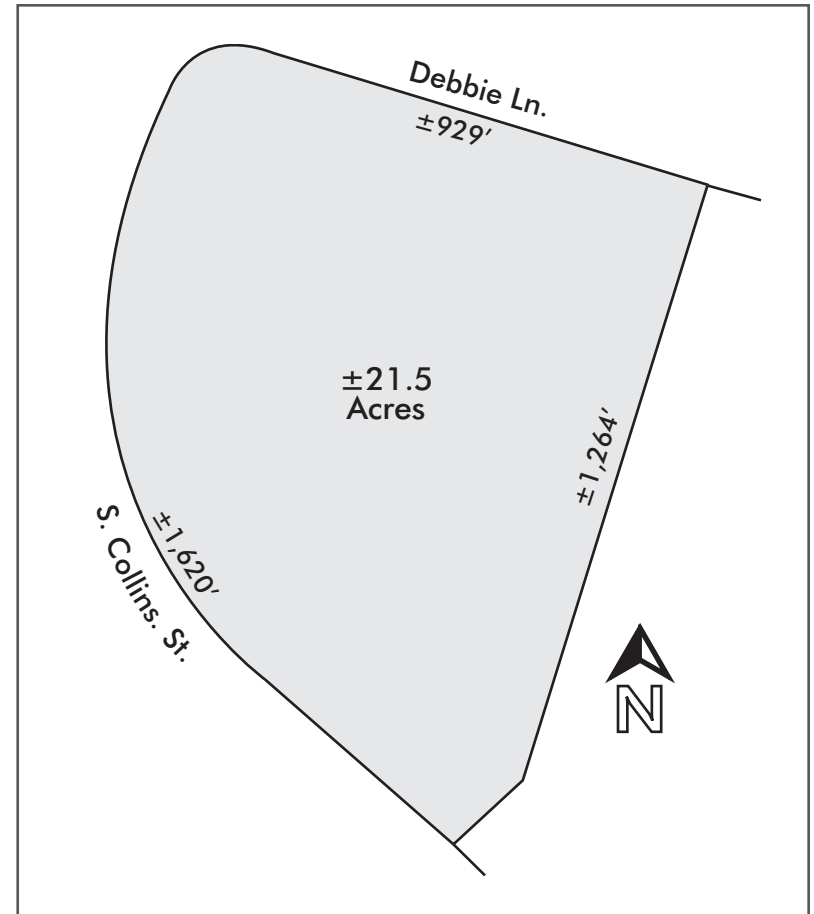
**PRICE:** Available upon request

**DEMOGRAPHICS:**

Radius	Population	Average Household Income
1 mile	3,228	\$ 111,714
3 mile	51,056	\$ 97,210
5 mile	129,290	\$ 87,214

**COMMENTS:** This is an excellent retail site with incredible single family growth going on in the immediate area. Collins Street is being improved to the north. This site would be an excellent site for a retail shopping center.

Site Plan



[www.cbre.com](http://www.cbre.com)

**CBRE**  
CB RICHARD ELLIS

5430 LBJ Freeway, Suite 1100  
Dallas, TX 75240

T 972.458.4800 / F 972.702.8315

For additional information, please contact:

**Jim Whitten**

First Vice President  
972.458.4885

[jim.whitten@cbre.com](mailto:jim.whitten@cbre.com)

**William Busch**

Senior Sales Analyst  
972.458.4852

[william.busch@cbre.com](mailto:william.busch@cbre.com)

Web site: [www.selectland.com](http://www.selectland.com) (ID# 396)